



THE SHADE STORE WIRELESS LINK OVERVIEW

Integration supports discrete window treatment control and features a two-way communication system that offers real-time window treatment position and battery level status. The hub supports ethernet cable (CAT 5) and wireless communication (2.4GHz) for home automation integration, using the RJ45 port conveniently located on the back of the hub. Each hub can support the integration of up to 30 window treatments.

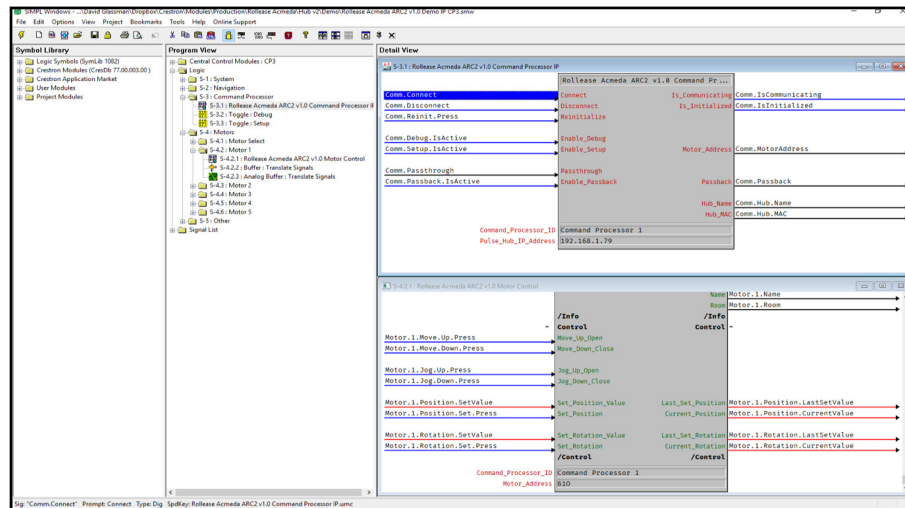
GETTING STARTING

In order to integrate your motorized window treatments with Crestron, you must:

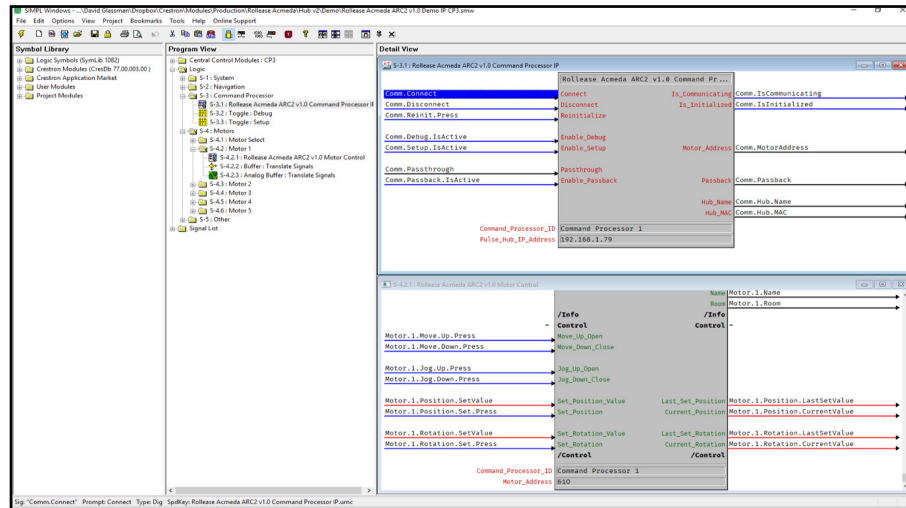
- Download the free app, The Shade Store V2, in the Apple App Store or Google Play Store.
- Purchase The Shade Store Wireless Link hub. Depending on size of the space, additional hubs may be required.
- Integrate your motorized window treatments with The Shade Store V2 app.

STEP 1

1. Find Rollease Acmeda ARC2 module in the Crestron Application Marketplace.
2. Unzip folder and open the Rollease Acmeda ARC2 v1.0 Demo IP CP3.smw file in SIMPL Windows. Unzip folder and open the Rollease Acmeda ARC2 Demo v1_0.apw file in NetLinX Studio.

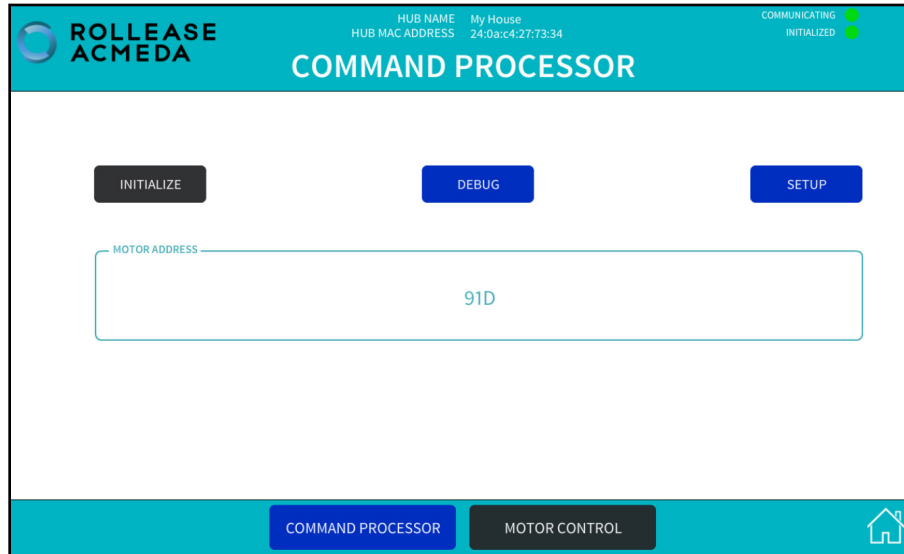


3. Locate the Rollease Acmeda ARC2 v1.0 Command Processor IP symbol in the SIMPL Windows program and replace the current IP address on the **Pulse_Hub_IP_Address** parameter with the actual IP address of your hub.
4. Comment out the entire "Motors" subfolder in the example program.
5. Compile and load the example program to your Crestron processor.



- Open the Release Acmeda ARC2 v1.0 Demo XPanel.c3p file to open the XPanel simulator on your computer (you may need to install Adobe Air first with the included CrestronXPanel installer files).
- Once the XPanel opens, click Options. Host Settings in the top menu and enter the IP address of your Crestron processor in the Hostname/IP Address field and hit connect. This will connect your XPanel to your processor and allow for using the XPanel as a simulator in place of a physical **touchpanel**.
- The module will automatically attempt to communicate with the hub when the program loads. Once communication is established with the hub, the Communicating indicator on the top right of the XPanel will illuminate. If it does, proceed to the next steps. If it does not, verify the IP address you entered in SIMPL Windows is correct and that the hub and Crestron processor are on the same network.
- On the Command Processor tab in the **XPanel**, click the "Setup" button so it illuminates blue.
- Using a remote or the The Shade Store V2 app, move each shade to initiate a response (in order to identify each).
- The address of the last motor that moved/responded will automatically populate in the Motor Address field on the XPanel. Move each motor to identify each address.

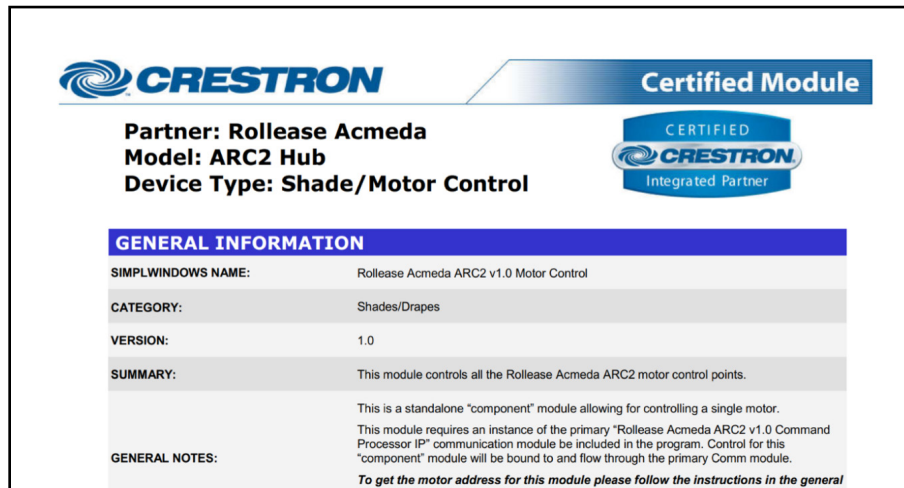
STEP 2



- Once you have the address for all your desired motors, uncomment the entire "Motors" subfolder in the example program and enter in the appropriate address in the *Motor_Address* parameter for each instance of the Rollease Acmeda ARC2 v1.0 Motor Control module in your program (the example program has 5 motors. You may have more or less in your installation). Once the addresses have been entered, recompile and reload your program.

Refer to the help files included in the module package for further details and information regarding the capabilities of the module(s).

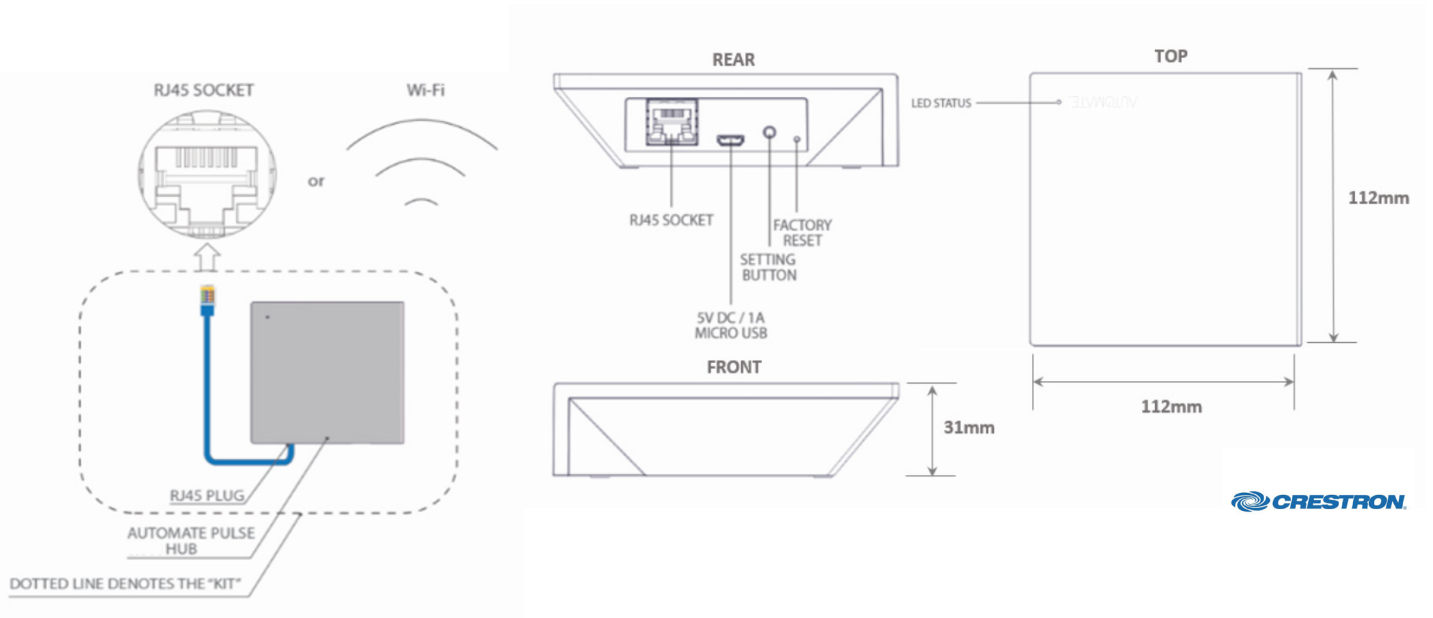
STEP 3



COMMON MISTAKE

Entering the wrong IP address in the "IP Address" configuration line. If you're failing to discover devices double check this.

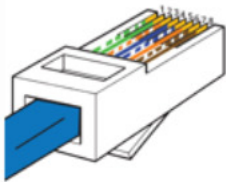
INTEGRATION TOPOLOGY



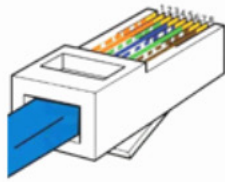
- The CAT 5 cable should be no longer than 100 meters (328ft).
- Router, switch or access point are required to connect the Hub via LAN connection.
- WiFi repeater is required depending on the cover of the WiFi router signal.
- The AUTOMATE PULSE HUB 2 works only with Wi-Fi in 2.4Ghz (not 5Ghz).

CONNECTIONS

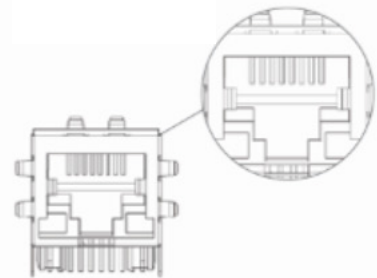
RJ45 PINOUT
T-568A



RJ45 PINOUT
T-568B



RJ45 SOCKET



- | | |
|-----------------|----------------|
| 1: White | 5: White Blue |
| 2: Green | 6: Orange |
| 3: White Orange | 7: White Brown |
| 4: Blue | 8: Brown |

The standard connections of the Automate Pulse Hub 2 is Ethernet or WiFi. For a LAN connection, you can use a straight through wiring accordingly indicated above.

TROUBLESHOOTING

No hub detected.

Make sure that your hub is connected to the correct network and get an IP Address available and still communicating with the network using the The Shade Store V2 app.

Shade limits are not set properly.

Calibrate shade limits with your remote before setting the appropriate open and close time within AMX system.

Shade is not moving at all.

Make sure the selected hub is the correct hub for the shade to be controlled. Confirm the correct bindings are set in the CONTROL4 System connections tab between the hub and shade drivers.

I have multiple hubs, what do I do?

Load two Automate Pulse Hub 2 drivers. After selecting "Retrieve Hubs" located in the driver actions tab, you will see different hubs - select the desired one.

I don't see any shade bindings in the Pulse Hub 2 driver?

Select "Retrieve Shades" located in the driver actions tab.

How do I scan for available hubs?

Once the hub is properly connected via the Ethernet cable or Wireless network, navigate to the Automate Pulse Hub 2 Properties page within Composer. Select "Retrieve Hubs" located in the driver actions tab.

We get unexpected responses from the CONTROL4 system, or "?" symbols.

Ensure that all connections using the ethernet port or Wi-Fi are working properly. The missed connection has been known to yield unwanted or unexpected results.

SUPPORT RESOURCES:

The Shade Store

800.754.1455

help@theshadestore.com

M-Sat / 9AM - 9PM EST

Rollease Acmeda

800.552.5100

automate@rolleseeacmeda.com

M-F / 9AM - 5PM EST