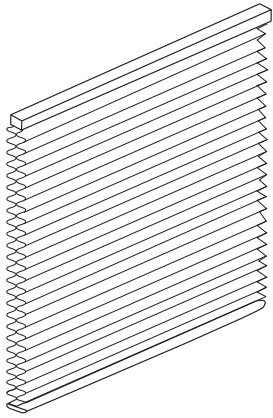


# INSTALLING YOUR MOTORIZED CELLULAR/PLEATED SHADE



**PARTS INCLUDED:**

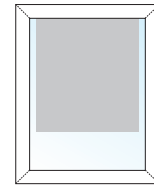
- Screws
- Mounting Brackets
- 1x Plug-In Charger w/Extension Cable\*
- External Battery with Brackets\*
- Remote Control(s)

\*Battery Motor Only

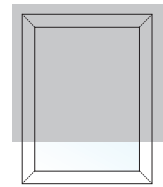
**TOOLS YOU WILL NEED:**

- Drill with a 1/8" bit
- Hex Head and/or Phillips bit
- Phillips Screwdriver
- Metal Tape Measure

**MOUNT TYPE YOUR INSTALLING FOR:**



FOR INSIDE MOUNT  
SEE SECTION 1A



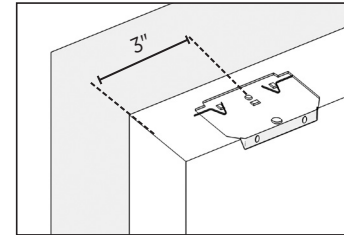
FOR OUTSIDE MOUNT  
SEE SECTION 1B

**Note:** Your brackets must be securely attached to the mounting surface. If your screws are not secure you'll have to use a different fastener which can be found at any local hardware store.

## 1A. Mounting Your Brackets - Inside Mount/Ceiling Mount

**Note:** If you are installing an external battery, determine the best position before installing the brackets. See Step 3 for battery mounting options.

- Position the two mounting brackets so that their center lines are 3" from the ends of the shade. Measure and mark all bracket center lines.
- The brackets are mounted flat against the top sill surface. Place the screw through the hole closest to the front of the bracket.

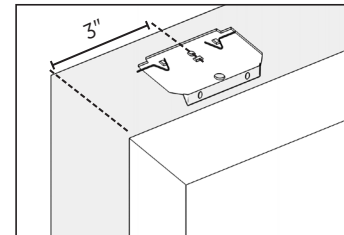


**Note:** If more than two brackets are required, additional brackets have been supplied and are to be spaced evenly between the two end brackets.

## 1B. Mounting Your Brackets - Outside Mount

**Note:** If you are installing an external battery, determine the best position before installing the brackets. See Step 3 for battery mounting options.

- Position the two mounting brackets so that their center lines are 3" from the ends of the shade. Measure and mark all bracket center lines.
- The brackets are mounted with two screws through the back end of the bracket flat against the window molding or the wall above the window.



**Note:** If more than two brackets are required, additional brackets have been supplied and are to be spaced evenly between the two end brackets.

## 2. Installing Your Shade

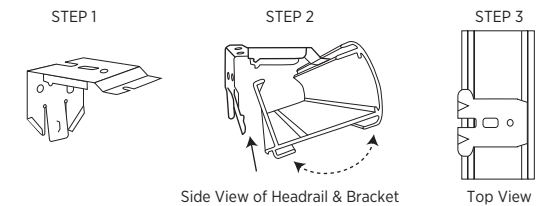
### For Battery Option

- Hold the shade up near the brackets and insert the front clip of the bracket into the front groove of the rail.
- Make sure the shade is centered in the window opening.
- Push the rail back and up until the back clips of the bracket are inserted in the back groove of the rail.
- To remove shade, reverse directions above.

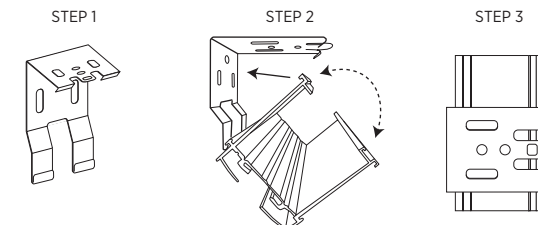
### For Plug in Option

- Hold the shade up near the brackets, tilt headrail towards you and secure bottom lip of headrail to bottom hooks of the bracket.
- Make sure the shade is centered in the window opening.
- Tilt headrail away from you and press back and up to lock top portion of headrail to top hooks of the brackets.
- To remove shade, reverse directions above.

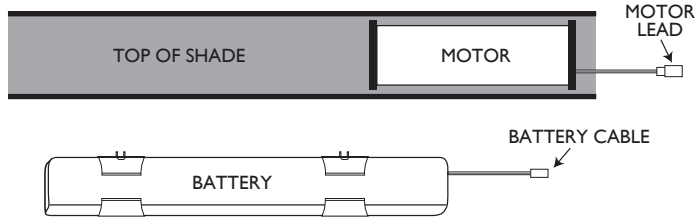
### BATTERY OPTION



### PLUG-IN OPTION



### 3. Installing Your Battery (For Plug-In Motors: Plug your motor into an outlet and proceed to Step 5)

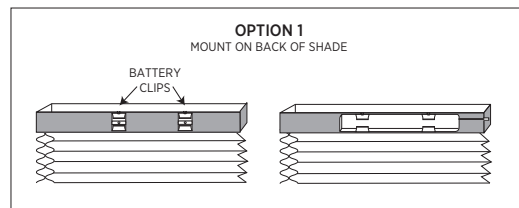


**Note:** Distance from motor lead to battery not to exceed 18". For longer leads please contact [help@theshadestore.com](mailto:help@theshadestore.com).

#### For Option 1 (Inside Mount Only)

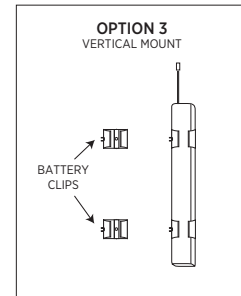
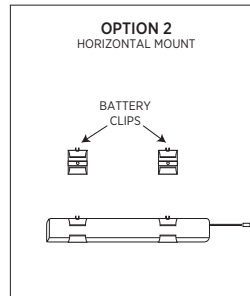
- Mount battery to back of shade as shown.
- Connect battery cable to motor lead.

**Note:** The hooks can be unfolded from the mounting clips and used to mount the external battery pack on the back of the shade.



#### For Option 2 & 3

- Select the desired location for your battery and mark location.
- Install the battery clips at marked location, 6" from each other, on center, with the included screws. Be sure that the clips are level with each other.
- Gently slide Battery Wand into clips.
- Connect battery cable to motor lead.



### 4. Operating Your Shade

- Your shades have been pre-programmed.
- A channel has been assigned to each motor based on your specifications.
- We've also set approximate upper and lower limits.
- For more information, see the Quick Start Guide that came with your shade or visit [www.theshadestore.com/motors-help](http://www.theshadestore.com/motors-help).

### Care and Cleaning

Always clean with a low suction, hand held vacuum or dust with a soft, clean cloth or feather duster. If you're dealing with dirt and stains, we suggest using a Mr. Clean® magic eraser to spot treat dirt and stains. This is available online, at local home improvement stores or we can send directly to you via USPS (1-3 days) at no charge.

### Warranty

The Shade Store products are covered by a limited lifetime warranty. This warranty covers any defects in materials or workmanship so long as the product is measured and installed according to instructions. Every Shade Store window treatment is designed to provide trouble-free use.